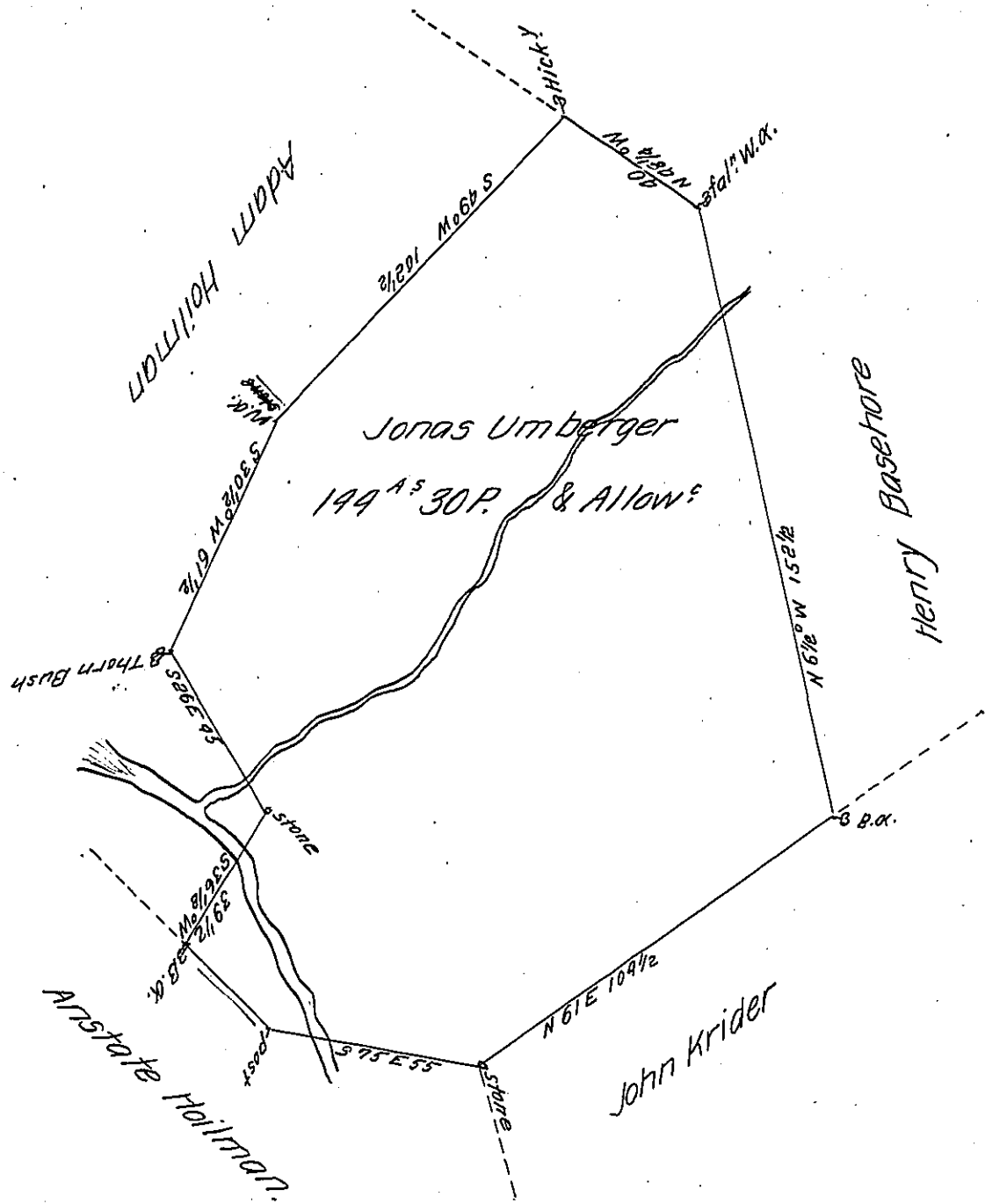


FORM No. 1.



Survey'd for Jonas Umberger on the 27th Day of January 1808. by Levi G. Hollingsworth the Above Described Tract of Land Containing one hundred and forty four Acres & thirty perches and the Usual Allowance of $\frac{Six}{1}$ P. Ct. Situate in Lebanon Township Dauphin County being part of a larger tract of 233⁰² & Allowance Granted to Henry Umberger by Warrant dated the 4th Day of January 1749.

Andrew Porter Esq.

John M^cKee D.S.

Surveyor General.

IN TESTIMONY that the above is a copy of the original remaining on file in the Department of Internal Affairs of Pennsylvania, made conformably to an Act of Assembly approved the 16th day of February 1833, I have hereunto set my hand and caused the Seal of said Department to be affixed at Harrisburg, this Seventh day of March 1907

Isaac B. Brown
Secretary of Internal Affairs.